



Gail Mather

Non-Principal Property Practitioner
Registered with PPRA
(FFC 009 395 8)

083 447 7327
gmather@huizemark.com

Contact **Sandton**

011 7894448

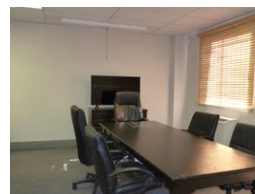
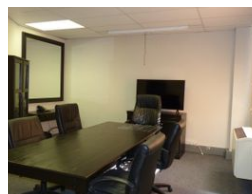
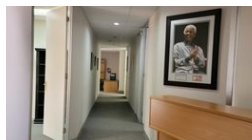
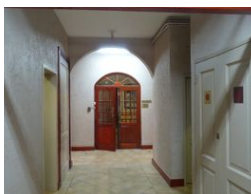
Huizemark Block 2A
Bryanston Gate Office Park
170 Curzon Road
Bryanston
2191

FEATURED



SOLE MANDATE

Web Ref 7048805



R1,700,000

Monthly Levy R8,500 Excl. VAT

Monthly Rates R3,300 Excl. VAT



0



0.9

172m² Office For Sale in Lyme Park

Professional Office Space for Sale in Prime Lyme Park Location

A rare opportunity to own sectional title offices in the heart of sought-after Lyme Park. Offering 172 sqm of well-maintained space, this unit is ideal for a range of professional or creative businesses.

The current layout includes five private offices, a spacious boardroom, kitchen, and two patios that overlook manicured gardens and enjoy sweeping views of the Sandton skyline. The flexible internal layout can easily be reconfigured to suit your specific business needs.

Additional features include:

9 dedicated parking bays

Excellent security with controlled access

Beautifully maintained, secure office complex

Tranquil surroundings with landscaped gardens

Features

Zoning Commercial

Exterior

Open Parking Bays 0.9

Sizes

Floor Size 172m²