



Matthew Kets
0768504757
mkets@huizemark.com

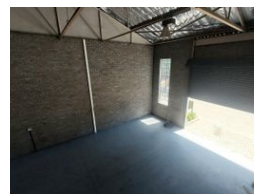
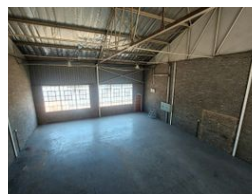
Contact Sandton

011 7894448

Huizemark Block 2A
Bryanston Gate Office Park
170 Curzon Road
Bryanston
2191



Web Ref 6973475



R80 per m²

Gross Monthly Rental R20,400 Excl. VAT

0 0

Unit 13 Ashbow Industrial Park Rental

For Rent: Neat Industrial Warehouse with Office Space in Secure Industrial Park

Location: Midrand, Gauteng

This 255 sqm industrial warehouse is now available to lease, situated within a secure industrial park with 24/7 security for your peace of mind. Ideal for businesses seeking a functional and safe space, this warehouse offers:

Key Features

Office Component:

Small office section over two floors.

Includes:

Ablutions.

Kitchenette for staff convenience.

Warehouse Specifications:

Good roof height to the eaves, ideal for storage and operational needs.

Ample natural light to reduce energy consumption.

1 large roller shutter door for efficient loading and offloading.

3-phase power, supporting various industrial operations.

Location Advantages:

Centrally positioned in Halfway House, Midrand.

Features

Zoning Commercial

Sizes

Floor Size 255m²