



**Neil Hopwood**

Principal Property  
Practitioner  
Registered with PPRA  
(FFC 035 162 2)  
0824599791  
nhopwood@huizemark.com



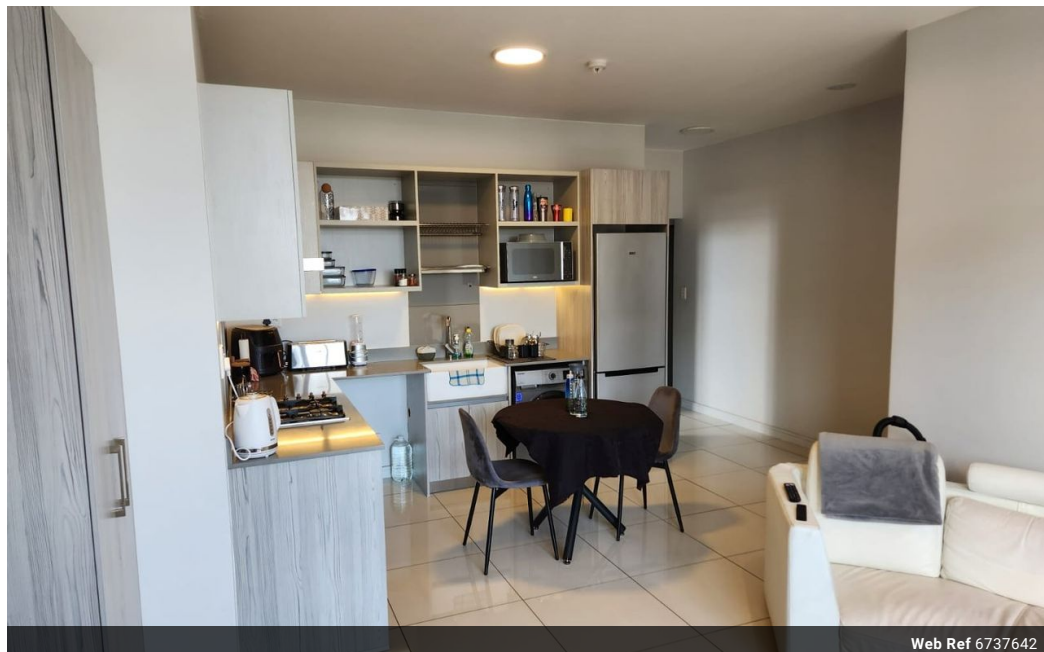
**Jonathan Robson**

Candidate Property  
Practitioner  
Registered with PPRA  
(FFC 124 581 0)  
0828066987  
jrobson@huizemark.com

Contact **Sandton**

**011 7894448**

Huizemark Block 2A  
Bryanston Gate Office Park  
170 Curzon Road  
Bryanston  
2191



Web Ref 6737642



**R2,349,000**

2 2

**Monthly Bond Repayment** R23,847.73

Calculated over 20 years at 10.75% with no deposit.

**Transfer Costs** R101,472.00 **Bond Costs** R36,530.00

These calculations are only a guide. Please ask your conveyancer for exact calculations.

**Monthly Levy** R3,553 **Monthly Rates** R2,395

The Median – The heart of Rosebank – Yours for R2 349 000-00.

Located in the trendy and fashionable centre of Rosebank, shopping and entertainment is at your very fingertips. Ready to be enjoyed at your leisure.

With modern fittings throughout, the open plan living area is made up of the kitchen, lounge and covered balcony. Kitchen has a gas hob (piped) and space for two appliances and a single door fridge. The two bedrooms have laminated flooring. The main bedroom is ensuite with a shower and the second bathroom has a bath. Two basement parking spaces complete the unit.

Security controlled entrance.  
Concierge services.  
Backup water and generator.

Rates: R2 395-32 & Levy: R 3 552-65.  
All offers presented.

## Features

### Interior

Bedrooms	2
Bathrooms	2
Kitchens	1
Recep. Rooms	2

### Extras

Property has a generator.

### Exterior

Carports / Parkings	2
Security	Yes
Pool	No

### Sizes

Floor Size	73m²
------------	------