

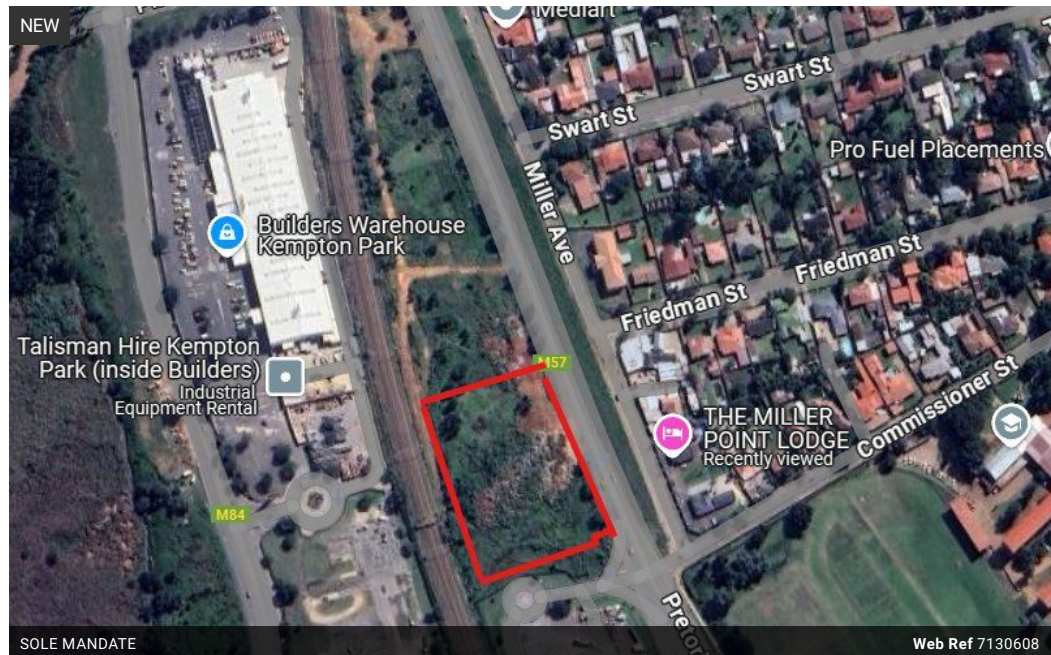


Matthew Kets
0768504757
mkets@huizemark.com

Contact Sandton

011 7894448

Huizemark Block 2A
Bryanston Gate Office Park
170 Curzon Road
Bryanston
2191



R17,000,000

Monthly Bond Repayment R172,588.92

Calculated over 20 years at 10.75% with no deposit.

Transfer Costs R1,865,984.00 **Bond Costs** R118,035.00

These calculations are only a guide. Please ask your conveyancer for exact calculations.

Prime 11,686 sqm Land in Kempton Park – Industrial or mixed-use development.

Unlock the potential of this expansive 11,686 sqm piece of land in the highly sought-after area of Kempton Park. This prime property offers a unique opportunity for business development, strategically located to capitalize on the growth of the surrounding area.

Key Features:

- Size: 11,686 sqm of flat, easily developable land.
- Location: Ideally positioned close to established residential developments, as well as being positioned in between major retailing outfits such as Builders warehouse, BUCO and Festival Mall, making this a highly sought-after stand.
- Convenience: Just minutes away from major retail centers, ensuring easy access to essential services and amenities for residents or customers.
- Accessibility: Well-connected to major roads, enhancing the location's appeal for businesses or...

Features