

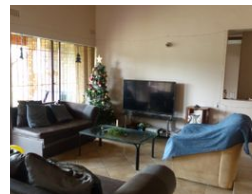
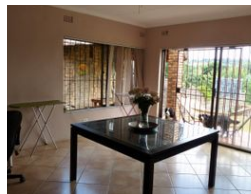


**Gail Mather**  
Non-Principal Property  
Practitioner  
Registered with PPRA  
(FFC 009 395 8)  
083 447 7327  
gmather@huizemark.com

Contact **Sandton**

**011 7894448**

Huizemark Block 2A  
Bryanston Gate Office Park  
170 Curzon Road  
Bryanston  
2191



**R2,450,000**

4 2 3

**Monthly Bond Repayment** R25,288.62  
Calculated over 20 years at 11% with no deposit.

**Transfer Costs** R111,720.00 **Bond Costs** R38,415.00  
These calculations are only a guide. Please ask your conveyancer for exact calculations.

**Monthly Rates** R1,650

Just behind Kya Sands - multi-functional property with huge workshop

This smallholding has it all - main house, cottages, workshop and staff accommodation ..... The old main house has open plan living spaces that lead to a covered patio and garden area; great spaces and with a little tlc it will be a family home or maybe office space or whatever you need it to be, so versatile. The cottages vary in size and could provide excellent rental income or space for the extended family. The workshop is approximately 800sqm under roof with 3-phase electricity, kitchen and bathroom facilities. Fully secured, there are many options for the energetic entrepreneur, large family or just looking for space people - take this property and make it your own.

## Features

### Interior

Bedrooms	4
Bathrooms	2
Kitchens	1
Recep. Rooms	3
Studies	1

### Exterior

Garages	3
Security	Yes
Pool	Yes

### Sizes

Land Size	21,500m²
-----------	----------