



Sandy Wheeler

Non-Principal Property
Practitioner
Registered with PPRA
(FFC 056 728 2)

0832712315
swheeler@huizemark.com



Gail Mather

Non-Principal Property
Practitioner
Registered with PPRA
(FFC 009 395 8)

083 447 7327

gmather@huizemark.com

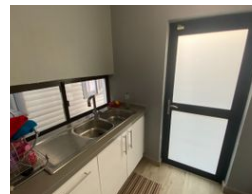
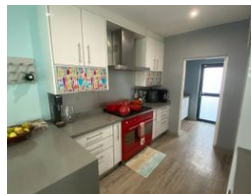
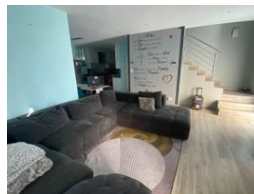
Contact Sandton

011 7894448

Huizemark Block 2A
Bryanston Gate Office Park
170 Curzon Road
Bryanston
2191



Web Ref 6715364



R2,450,000

🛏️ 3 🚿 2.5 🚗 2

Monthly Bond Repayment R24,873.11

Calculated over 20 years at 10.75% with no deposit.

Transfer Costs R111,720.00 **Bond Costs** R38,415.00

These calculations are only a guide. Please ask your conveyancer for exact calculations.

Monthly Levy R1,950 **Monthly Rates** R2,867

MODERN, PROFESSIONAL, EVER POPULAR SERENE AND SAFE ESTATE

This stylish full title cluster is situated in a well maintained and ever popular estate. Enter the open plan lounge, dining and kitchen area with sliding doors allowing for indoor/outdoor living spaces, with a enclosed entertainment braai area. The kitchen has plenty cupboard space, a beautiful red SMEG 6 cooker gas stove and under counter oven as well as extractor fan, granite tops and dedicated fridge space all make for a beautiful kitchen with a separate scullery with double basins and space for two wet appliances. A guest loo is discreetly situated under the wide staircase with stainless steel balustrade which leads to the upper level where 3 spacious sized bedrooms are found. The main bedroom has a walk-through dressing room and a full bathroom. A private balcony leads off this bedroom. A second full bathroom services...

Features

Interior

Bedrooms 3
Bathrooms 2.5
Kitchens 1
Recep. Rooms 1

Exterior

Garages 2
Security Yes
Pool No

Sizes

Floor Size 205m²