



**Amy Gopal**

Non-Principal Property  
Practitioner  
Registered with PPRA  
(FFC 115 188 7)

0659022158  
agopal@huizemark.com

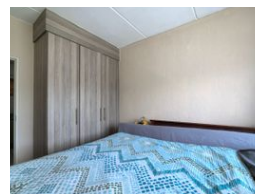
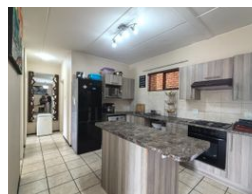
Contact **Sandton**

**011 7894448**

Huizemark Block 2A  
Bryanston Gate Office Park  
170 Curzon Road  
Bryanston  
2191



Web Ref 6937620



**R740,000**

2 2

**Monthly Bond Repayment** R7,512.69

Calculated over 20 years at 10.75% with no deposit.

**Transfer Costs** R25,898.00 **Bond Costs** R19,565.00

These calculations are only a guide. Please ask your conveyancer for exact calculations.

**Monthly Levy** R752 **Monthly Rates** R1,000

### A Great Opportunity for First-Time Buyers!

This ideal starter unit offers comfortable living in a secure, well-maintained complex in the heart of Randpark Ridge. This first-floor apartment is perfect for young professionals, small families, or investors looking for a great opportunity.

Enjoy peace of mind with 24-hour security and a guard at the gate, ensuring safe and lock-up-and-go lifestyle.

Key Features:

Open Plan lifestyle... offering

2 Bedrooms, 2 Bathrooms – Main bedroom with en-suite

Face Brick Exterior – Low maintenance and long-lasting appeal

1 Covered Carport for secure parking

Secure Complex with 24h Guarded Access

Prime Location! Convenient with quick access to Beyers Naudé Drive, making commuting effortless. Close to top schools, business districts, and popular amenities.

Levies & Costs:

Standard Levy: R751.58

Total Levy estimated at R3,279.58...

### Features

#### Interior

|              |   |
|--------------|---|
| Bedrooms     | 2 |
| Bathrooms    | 2 |
| Kitchens     | 1 |
| Recep. Rooms | 1 |

#### Exterior

|                     |     |
|---------------------|-----|
| Carports / Parkings | 1   |
| Security            | Yes |
| Pool                | No  |