



Cheryl Gibbs

Candidate Property Practitioner
Registered with PPRA
(FFC 121 762 0)
0836291844
cgibbs@huizemark.com



Robin Devine

Non-Principal Property Practitioner
Registered with PPRA
(FFC 090 505 5)
082 326 5669
rdevine@huizemark.com

Contact Sandton

011 7894448

Huizemark Block 2A
Bryanston Gate Office Park
170 Curzon Road
Bryanston
2191

On Show



10:00 to 12:00



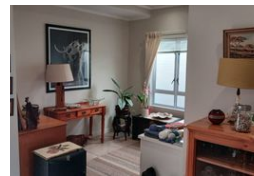
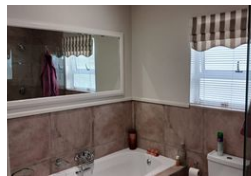
Saturday, 05 July 2025

NEW



ON SHOW

Web Ref 6618587



R2,449,000



2



1



1

Monthly Bond Repayment R24,862.96

Calculated over 20 years at 10.75% with no deposit.

Transfer Costs R111,640.00

Bond Costs R38,415.00

These calculations are only a guide. Please ask your conveyancer for exact calculations.

Monthly Levy R3,767

Monthly Rates R1,861

Retirement at its very best where the living is easy!!

This home is stunning and faces the beautiful Wetland where peace and tranquillity abound. There are more than 100 species of birds on the Wetland, with a lovely hide to watch them from enjoying your sundowners in the evenings. This home has a lovely open plan living space that flows seamlessly though from the entrance and kitchen to the lounge and patio.

The kitchen is spacious with lovely cupboards as well as a gas hob. The lounge has a large sliding door out onto the patio and garden. The garden has plenty of shrubs and trees perfectly screening the garden for privacy. There are two bedrooms one being the main bedroom...

Features

Interior

Bedrooms 2
Bathrooms 1
Kitchens 1
Recep. Rooms 3

Exterior

Garages 1
Security Yes
Pool Yes

Sizes

Floor Size 103m²