



Cheryl Gibbs

Candidate Property Practitioner
Registered with PPRA
(FFC 121 762 0)
0836291844
cgibbs@huizemark.com



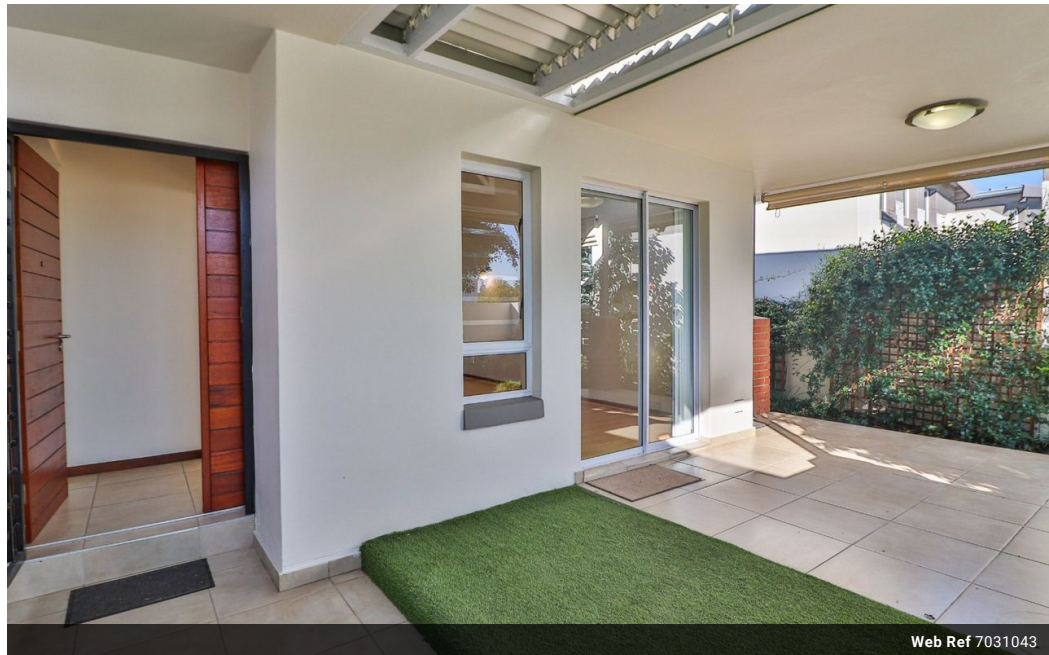
Robin Devine

Non-Principal Property Practitioner
Registered with PPRA
(FFC 090 505 5)
082 326 5669
rdevine@huizemark.com

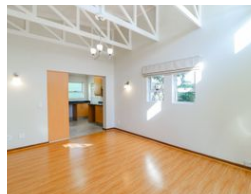
Contact Sandton

011 7894448

Huizemark Block 2A
Bryanston Gate Office Park
170 Curzon Road
Bryanston
2191



Web Ref 7031043



R1,895,000

2 1 1

Monthly Bond Repayment R19,238.59

Calculated over 20 years at 10.75% with no deposit.

Transfer Costs R68,906.00 **Bond Costs** R32,760.00

These calculations are only a guide. Please ask your conveyancer for exact calculations.

Monthly Levy R3,943 **Monthly Rates** R553

Retirement at its very best where the living is easy!!

This home is stunning and is close to the beautiful Wetland where peace and tranquility abound. There are more than 100 species of birds on the Wetland, with a lovely hide to watch them from enjoying your sundowners in the evenings. This lovely retirement property in the upmarket La Vie Nouvelle Village is move in ready and is as neat as a pin.

This home has a lovely open plan living space that flows seamlessly through from the entrance and kitchen to the lounge and patio. The kitchen is spacious with lovely cupboards as well as a gas hob. The lounge has a large sliding door out onto the patio and garden which is North facing so is in a lovely sunny position. The garden has plenty of shrubs and trees perfectly screening the garden for privacy. There are two bedrooms one being the main bedroom which has ample space with...

Features

Interior

Bedrooms	2
Bathrooms	1
Kitchens	1
Recep. Rooms	2

Exterior

Garages	1
Security	Yes
Pool	No

Sizes

Floor Size	102m²
------------	-------