



**Gail Mather**

Non-Principal Property Practitioner  
Registered with PPRA  
(FFC 009 395 8)

083 447 7327  
gmather@huizemark.com

Contact **Sandton**

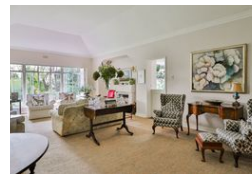
**011 7894448**

Huizemark Block 2A  
Bryanston Gate Office Park  
170 Curzon Road  
Bryanston  
2191

**FEATURED**



Web Ref 6927927



**R5,900,000**

 4  4

**Monthly Bond Repayment** R59,898.51

Calculated over 20 years at 10.75% with no deposit.

**Transfer Costs** R506,807.00 **Bond Costs** R65,785.00

These calculations are only a guide. Please ask your conveyancer for exact calculations.

**Monthly Rates** R3,418

**4 Bedroom House For Sale in Bryanston**

Prime Acre Property in Bryanston – A Rare Opportunity!

Nestled in the heart of Bryanston, this expansive one-acre property offers a unique opportunity for those seeking space, charm, and endless potential. The original double-storey family home, though older and in need of modernization, exudes character and provides a solid foundation for transformation.

Surrounded by majestic trees, rolling lawns, and serene natural beauty, this property is perfect for those who value privacy, tranquility, and a picturesque setting. Whether you choose to renovate, restore, or rebuild, the possibilities are endless in this highly sought-after location.

?? Prime Bryanston Address  
?? Lush Gardens & Established Trees, Sparkling Pool  
?? Spacious Double-Storey Home with Character  
? Endless Renovation or Redevelopment Potential

Don't...

**Features**

| Pets Allowed        |     | Yes |  |           |         |
|---------------------|-----|-----|--|-----------|---------|
| Interior            |     |     |  | Sizes     |         |
| Bedrooms            | 4   |     |  | Land Size | 5,623m² |
| Bathrooms           | 4   |     |  |           |         |
| Kitchens            | 1   |     |  |           |         |
| Recep. Rooms        | 3   |     |  |           |         |
| Exterior            |     |     |  |           |         |
| Carports / Parkings | 2   |     |  |           |         |
| Security            | Yes |     |  |           |         |
| Dom. Accom.         | 1   |     |  |           |         |
| Pool                | Yes |     |  |           |         |