



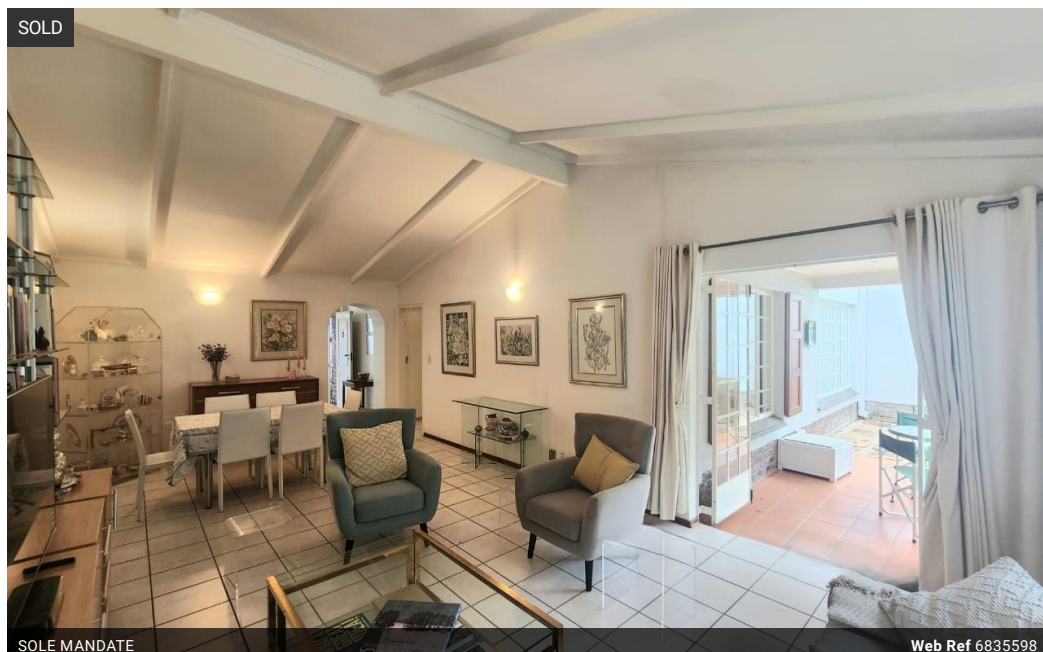
Neil Hopwood

Principal Property
Practitioner
Registered with PPRA
(FFC 035 162 2)
0824599791
nhopwood@huizemark.com

Contact Sandton

011 7894448

Huizemark Block 2A
Bryanston Gate Office Park
170 Curzon Road
Bryanston
2191



R1,995,000

 3  2  1

Monthly Bond Repayment R20,253.82

Calculated over 20 years at 10.75% with no deposit.

Transfer Costs R74,906.00 **Bond Costs** R32,760.00

These calculations are only a guide. Please ask your conveyancer for exact calculations.

Monthly Levy R4,670 **Monthly Rates** R1,328

Gorgeous, Garden Simplex Cottage In Popular Complex

Your tranquil retreat in the heart of suburbia. This private, sunny and bright simplex unit is ideal for a couple downsizing, a busy executive looking for easy, lock up and go living or a young couple starting out. Excellent 24 hour security and conveniently located with easy access to all popular amenities and major arterial routes. 10 minutes to Sandton CBD.

The welcoming entrance leads to a spacious, seamless dining room and lounge flowing out to the patio and established garden. The kitchen is well appointed, features granite tops and has space for 2 under counter appliances and a single door fridge. The bedroom wing boasts 3 deluxe, generously sized beds (or 2 beds and a study) plus 2 baths (m-e-s). The unit is tiled throughout and therefore very easy to maintain.

Additional features include a drying...

Features

Pets Allowed		Yes			
Interior		Exterior		Sizes	
Bedrooms	3	Garages	1	Floor Size	124m²
Bathrooms	2	Carports / Parkings	2	Land Size	12,980m²
Kitchens	1	Security	Yes		
Recep. Rooms	3	Pool	Yes		