



Sandy Wheeler

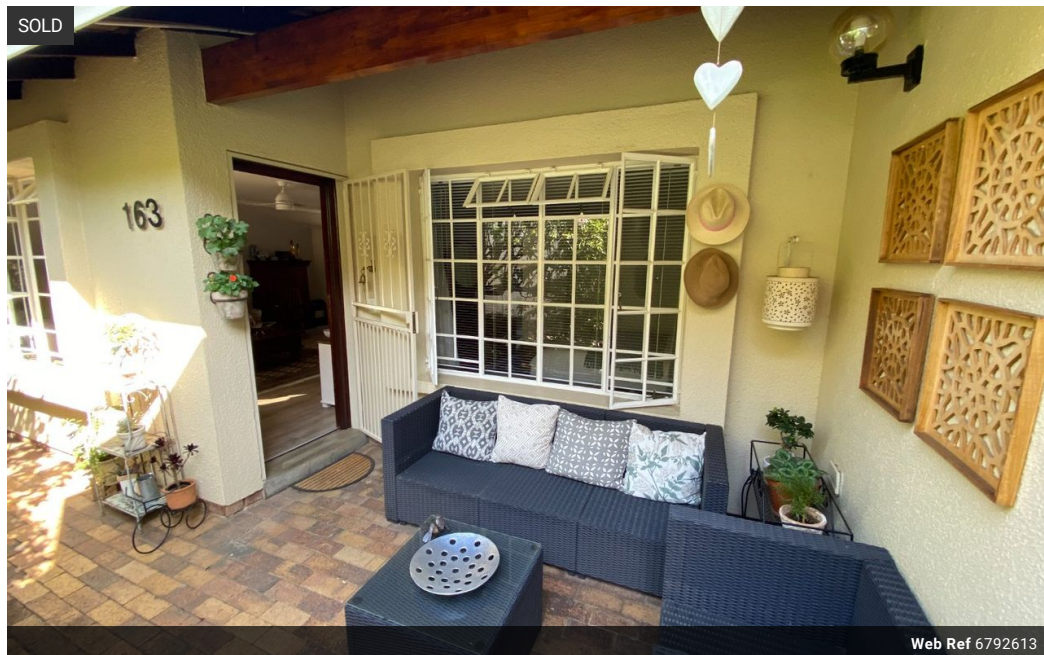
Non-Principal Property
Practitioner
Registered with PPRA
(FFC 056 728 2)

0832712315
swheeler@huizemark.com

Contact **Sandton**

011 7894448

Huizemark Block 2A
Bryanston Gate Office Park
170 Curzon Road
Bryanston
2191



R1,650,000

 2  1  1

Monthly Bond Repayment R16,751.28

Calculated over 20 years at 10.75% with no deposit.

Transfer Costs R52,453.00 **Bond Costs** R30,875.00

These calculations are only a guide. Please ask your conveyancer for exact calculations.

Monthly Levy R3,940 **Monthly Rates** R1,053

LIGHT, BRIGHT, FRESH NEW START – LIFE BEGINS AT 50

For the over 50's wanting to enjoy a mature lifestyle, this private, secure, sectional title estate, offers a variety of amenities within a lush setting. It is centrally located and close to Monte Casino, Fourways Mall, Design Quarter, and Fourways Life Hospital. Although just about anything you need is within close proximity the estate is set on a 89167m2 erf away from the maddening crowd.

The unit on offer is stylish, modern, and beautifully renovated.

The light and bright open plan lounge, dining and kitchen area all with vinyl flooring has a pleasing flow which offers comfortable space for relaxing or entertaining. The kitchen is well designed with good cupboard space, Caesar stone counter tops, a breakfast bar, a gas stove and electric oven complete the kitchen which leads off to an enclosed gated drying yard. Two...

Features

Interior

Bedrooms	2
Bathrooms	1
Kitchens	1
Recep. Rooms	2

Exterior

Garages	1
Security	Yes
Pool	Yes

Sizes

Land Size	94m ²
-----------	------------------