



Neil Hopwood

Principal Property
Practitioner
Registered with PPRA
(FFC 035 162 2)

0824599791
nhopwood@huizemark.com



Jonathan Robson

Candidate Property
Practitioner
Registered with PPRA
(FFC 124 581 0)

0828066987

jrobson@huizemark.com

Contact Sandton

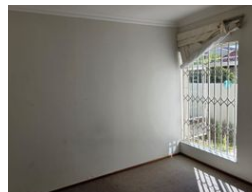
011 7894448

Huizemark Block 2A
Bryanston Gate Office Park
170 Curzon Road
Bryanston
2191



SOLE MANDATE

Web Ref 4222737



R1,849,000

Monthly Bond Repayment R18,771.58

Calculated over 20 years at 10.75% with no deposit.

Transfer Costs R66,146.00 **Bond Costs** R32,760.00

These calculations are only a guide. Please ask your conveyancer for exact calculations.

🛏️ 3 🚿 2 🚗 1

Beautiful simplex apartment with private garden available

This modern apartment is situated in a secure complex in Sandown/Strathavon and with easy access to Sandton CBD, Benmore Gardens and all major arterial roads and highways.

The separate kitchen is well appointed and has space for a fridge and two undercounter appliances and leads out to the dining room and spacious lounge opening out to a covered patio and private garden.

The 3 bedrooms are spacious and have built in cupboards with the main being en-suite with a shower. The third bedroom has a built in in wall unit ideal for all those books or a students study area.

There is a second bathroom to round it all off.

There is a single garage and a lock up carport

This complex has a swimming pool and ample visitors parking.

Asking R1 849 000-00 with all offers presented

Features

Pets Allowed	Yes				
Interior		Exterior		Sizes	
Bedrooms	3	Garages	1	Floor Size	107m²
Bathrooms	2	Carports / Parkings	1		
Kitchens	1	Security	Yes		
Recep. Rooms	3	Pool	Yes		